



2010 AOCC - F3C

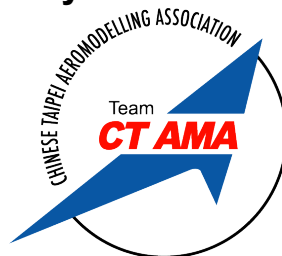
Bulletin 0

13 April 2010



**Asian Oceanic R/C Helicopter Championships
Taichung, Chinese Taipei**

Hosted by:



www.ctama.com.tw

**Taichung City, Chinese Taipei (Taiwan)
October 17 thru 23, 2010**

Principal Sponsors



Sponsors



Invitation

By appointment of Federation Aeronautique Internationale (FAI) and Chinese Taipei Aerosports Federation(CTAF), the Chinese Taipei Aeromodelling Association wish to invite all FAI member countries of the Asian Oceanic region to participate in the 6th Asian Oceanic Continental Championships (AOCC) for Radio Control Aerobatic Helicopters (FAI class F3C).

Each country is invited to send a team of three competitors plus team manager, helpers and supporters to participate in this championship held during 2010 October 17-23.

**John Cheng-Feng Chen
President
Chinese Taipei Aerosports Federation
Chinese Taipei Aeromodelling Association
FAI Active Member**

Organizing Committee

Chairman of Organizing Committee:

Cheng-Feng Chen
President
Chinese Taipei Aerosports Federation (NAC)
Chinese Taipei Aeromodelling Association

Co-chairman of organizing committee:

Elsa L.C. Mai
Secretary General
Chinese Taipei Aerosports Federation (NAC)

Contest Director

Jen-Yi Hung
Chief Officer for Chinese Taipei Aeromodelling Association F3C committee

Competition Site Director

Chin-Liang Chan
Chief Officer for Chinese Taipei Aeromodelling Association F3A committee

Committee member:

Alex Du (President of Align Corporation)
Teng-Tu Shih,
A-Chin Chen,
Chin-Tsai Wang,
Cheng-Min Wang,
Pao-Jung Wu,
Jui-Kai Lin

Executive secretary group:

Wendy Huang (Align corporation)
May Lo (Align corporation)

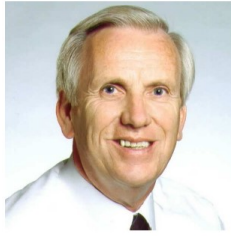
Dates and Daily Schedules

Date: 17 - 23 October 2010

Preliminary schedule:

Oct. 16 (Sat.)	Early arrival of participants
Oct. 17 (Sun.)	Registration and model processing. Unofficial practice. Opening ceremony. Welcome reception.
Oct. 18 (Mon.)	Official practice. Judges briefing. Team managers meeting.
Oct. 19 (Tue.)	Preliminary Rounds 1 and 2.
Oct. 20 (Wed.)	Preliminary Rounds 3 and 4. Team managers meeting. Judges briefing.
Oct. 21 (Thu.)	Reserve day. Sightseeing tour.
Oct. 22 (Fri.)	Final rounds 1 and 2.
Oct. 23 (Sat.)	Final round 3. Prize giving. Closing ceremony. Awards banquet.
Oct. 24 (Sun.)	Departure of participants.

FAI Jury



Horace Hagen - USA

Horace HAGEN (CIAM F3C sub-committee chairman) (USA)



Sandy PIMENOFF (CIAM President of Honor) (FIN)



Jimmy LAI (TPE)



**Reserve Jury:
Praphon TECHAVIPARK (THA)**

FAI Judges

Dag ECKHOFF (NOR)
Miguel RAMOS (PHI)
Nick CSABAFY (AUS)
Jason CHAN (HKG)
Yutaka UEDA (JPN)
Reserve judge-Frits van Laar (NED)



Dag Eckhoff – Norway



Nick Csabafy – Australia



Jason Chan –Hong Kong



Yutaka Ueda – Japan

ENTRY FEES and CLOSING DATE FOR ENTRIES

All fees must be paid and received by the organizers before Sep. 17th 2010 to avoid penalties.

Preliminary entries can be made by July 17th 2010

Participation	Amount
Team Manager	380€
Competitor	
Helper/Assistant	80€
Supporter	
Banquet (10/23)	30€

Registration fee is inclusive of the following:

1. Official Programs and Souvenirs
2. Official Entry Pass

Note: Closing Banquet is NOT included.

Entry Form and more detail can be found on AOCC 2010 website after April 30th 2010: <http://www.ctama.com.tw/aocc/>

Protest fee: 35 EUR

Contest Rules

Contest rules will be in accordance with FAI sporting code Section 4 2010 VOLUME F3C.

Requirements

Each competitor must present official 2010 FAI Sporting Licenses on Registration. The Sporting Licenses must be issued by the competitor's National Air-sports Control (NAC) affiliated with the Fédération Aéronautique Internationale (FAI).

Anti-Doping

If a competitor has to take any of the substances listed on the WADA Prohibited list for a medical condition, then he must have a Therapeutic Use Exemption from the FAI.

MEDIA & SPECTATORS

TV media will be invited. Furthermore, this event will be open to members of the public. Advertising will be arranged prior to the event to attract spectators.

INSURANCE

Participants in the event are insured against damage to property through an arranged group insurance policy, to a maximum of \$60,000USD/person.

Meals

International cuisines ranging from Japanese, Western to European food is available from many restaurants around the city. Average cost per meal is between Euro 8.00 to Euro 23.00.

CEREMONIES, BANQUET, and AWARDS

Opening and closing ceremony will be arranged, details to follow in subsequent Bulletins. An awards banquet is arranged for Saturday 23rd October 2010 . The cost is €30 per person. The organizers have prepared trophies and gifts for participants (hats and T-shirts). Winners in the individual and team championship will be awarded FAI CIAM medals and FAI Diplomas.

Model fuel

The following fuel will be available at the competition site:

- Cosmo 30% - Euro 25.00/gallon
- Cosmo 25% - Euro 23.00/gallon
- Cosmo 20% - Euro 20.50/gallon
- Cool Power 30% - Euro 26.50/gallon

Allowed Radio Frequencies

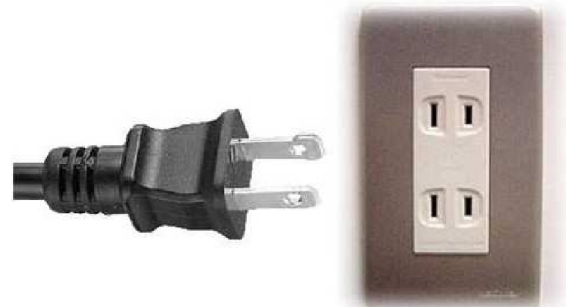
All 72MHz frequencies are cleared for use by aeromodellers in Chinese Taipei, and have been proven to be free from interference. The 2.4GHz band is also legal for use by aeromodellers in the Chinese Taipei. 72Mhz band will be available.

Transmitters on the 72 MHz RC frequencies:72.01, 72.03, 72.05, 72.07, 72.09, 72.11, 72.13, 72.15, 72.17, 72.19, 72.21, 72.23,72.25, 72.27, 72.29, 72.31, 72.33, 72.35, 72.37, 72.39, 72.41, 72.43, 72.45, 72.47,72.49, 72.51, 72.53, 72.55, 72.57, 72.59, 72.61, 72.63, 72.65, 72.67, 72.69, 72.71,72.73, 72.75, 72.77, 72.79, 72.81, 72.83, and 72.85 are all permitted

Standard Voltage and Power Outlet

Outlet power voltage in Taiwan is 110V 60Hz

Standard Plug and Outlet in Taiwan:



Official Language

English and Mandarin

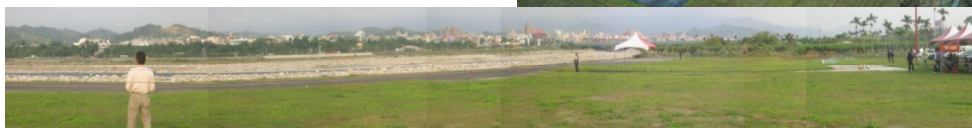
The Competition Site

Taichung City is the third largest city in Taiwan, and the home to many high-tech companies. The city is located in the centre of the country, to the west. The weather is very stable and comfortable all year around, and the temperature ranges from 25°C-28°C. Sunrise during October is at 06:00 and sunset at 17:00. The championships will take place at the Align Flying Field, located in the Tung-shih. The driving time from the Splendor Hotel (headquarters and accommodation) to the flying field (competition site) is about 40 minutes. The location of the site may be viewed on Google Earth at these coordinates:

24° 15' 44 527"N

120° 49' 03 47"E

Practice fields will be arranged for participants.



Functions and Events **(Optional tour)**

(I) Taipei 101 Tour

Price: (to be confirmed)

TAIPEI 101 is the world's first skyscraper to remain the tallest building in the world for 5 consecutive years. The rarest and the most proud achievements of TAIPEI 101 are not the multiple "first" records created during construction and for its height, but also the cutting-edge technology and architectural concepts that are able to withstand the major forces of nature such as earthquakes and typhoons. After conquering all obstacles and challenging the impossible, TAIPEI 101 is finally complete; since official opening, it is gradually being transformed into the best office building, best shopping mall and the best scenic spot.



(II) Sun Moon Lake Tour

Oct 23, 2010 - 08:00 to 17:00

Price: (to be confirmed)

Sun Moon Lake, situated in Nantou County's Yuchi Township, in the center of Taiwan, and is the island's largest lake. It is a beautiful alpine lake, divided by the tiny Lalu Island; the eastern part of the lake is round like the sun and the western side is shaped like a crescent moon, hence the name "Sun Moon Lake".



Precedence

Align Corporation has organized several local and national events on their flying field. The Align flying field was also the venue of successful international events, such as Align Fun-fly 2006/2007/2008, with more than 50 competitors from more than 20 countries participating every year.



The Venue: Taichung County

Taichung County is located at the central part of Taiwan, with the Central Mountains in the east and adjacent to Hualien County. It covers 2,051.4712 square kilometers, divided into twenty-one towns and villages. As to the contour, the county consists of coast plains in the west, Taichung Basin in the south, and mountainous areas in the east. Main rivers from the north to the south are as follows: Da-an River, Dajia River, and Wu River. The County has a mild climate, with the yearly average temperature of 22.8 degrees Celsius. It also has abundant rainfall, with 2,000 millimeters in mountainous areas and 1,000 to 2,000 millimeters on ground level. Its four seasons feel like spring, extremely good for farming.



Airport and Visa

Taoyuan International Airport

Taiwan Taoyuan International Airport is located in Taoyuan County approximately 40 kilometers, or about 50 minutes by car or bus from downtown Taipei. Taiwan Taoyuan Airport welcomes all passengers to enjoy the many facilities in Terminal I and Terminal II.



Visa

Nationals from countries listed below are allowed to enter Taiwan without visas for stay not exceeding thirty (30) days.

Australia, Japan, Republic of Korea, Malaysia, New Zealand, Singapore

For people from the countries not in the above list, you need apply the Taiwan visa in order to enter the country.

For more information, please check:

<http://www.boca.gov.tw/np.asp?ctNode=529&mp=2>

Transportation:

Attendants can choose following ways to get to Splendor Hotel in Taichung. (We have staff to receive you in the airport on arrival provide that itinerary is given to us before hand, instructions on how to take the transportation in the airport will be given on site)



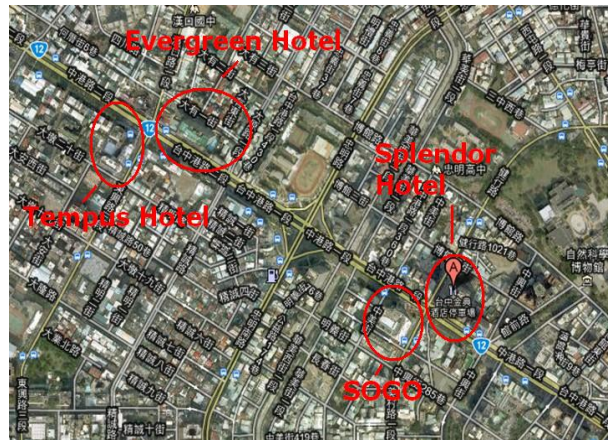
Shuttle bus from the airport -> Taoyuan HSR station to Taichung HSR station -> Shuttle bus to SOGO department store station. Euro 13.00 each



Bus from airport to Taichung SOGO station. Euro 6.00 each



Please see below for prices for car rental.



Car rentals price list:
(International driving license is mandatory to rent and drive in Taiwan)

Vehicle	Rent/Day	Car's available
Car	Avg. Euro 75.00	VIOS ALTIS CAMARY
Van	Avg. Euro 95.00	SERENA INNOVA RAV4
*The exact rental car type is based on what the local service location offers.		

For terms and conditions for car rental

https://www.easyrent.com.tw/English/Terms_and_conditions.html

For more information, please visit HOTAI LEASING CORPORATION website.

<https://www.easyrent.com.tw>

Accommodation

Splendor Hotel. The rates for the participants are as follows:

Hotel	Single	Twin
Splendor Studios (Level ★★★)	Euro 54.00	Euro 58.50
Splendor Hotel (Level ★★★★★)	Euro 84.00	Euro 94.00
Tempus Hotel (Level ★★★★★)	Euro 85.00	Euro 95.00
Evergreen Laurel Hotel (Level ★★★★★)	Euro 98.00	Euro 102.50

***Rates include breakfast**

***Be sure to advise the front desk that you are invited by FAI in order to get the above special prices.**

The Splendor Hotel

<http://www.splendor-taichung.com.tw/tce/index.htm>



The Splendor Hotel provides world-class accommodation and service at very reasonable rates. This hotel is situated about 40 minutes from the competition site.

The Splendor Hotel is located in the center of Taichung downtown. The National Science Museum, SOGO Department store and many restaurants for different cuisines are nearby.



Tempus Hotel

(<http://www.tempus.com.tw/eng/location.php>)



Contemporary and tasteful with a global outlook, Tempus delivers a one-of-a-kind hotel experience, combining stylish décor with friendly, attentive service. Creating a new concept by unifying the elements of City and Resort, Tempus brings together travel, leisure, and style into its overall design. It is home to the Mandara Life Club, Mandara Massage, La Mode Restaurant, Hai-Yue Restaurant, and Le Bar, offering complete leisure facilities, delicate dining experiences, and accommodating service. Tempus will allow you to put aside the chaos and stresses of the city and make you feel at home, letting you enjoy a comfortable, carefree, and refined lifestyle.



Tempus Hotel Taichung is situated in the center of Taichung's commercial, business, and shopping district. It is only 10 minutes by car from the National Highway No.1 interchange, making it easily accessible from Northern and Southern Taiwan. With the convenience of the Taiwan High Speed Rail, Taichung is only one hour away from Taipei and Kaohsiung, making the city a central hub of Western Taiwan. Be it business, entertainment, shopping or sightseeing, Tempus Hotel is but a heartbeat away.

Evergreen Laurel Hotel

<http://www.evergreen-hotels.com/branch/content/about/about01.aspx>



Evergreen Laurel Hotel (Taichung) is located in the Chungkang commercial district, an area that has great potential for further commercial development. The hotel uses a gray-themed textural quality to skillfully build up its image as the king of internationalization.

Evergreen Laurel Hotel (Taichung) has 354 deluxe guest rooms and exclusive VIP floors. The quiet, elegant and comfortable environment will allow you to relax your body and mind, whether you are a tourist or on business trip. Our elegant and conscientious service fully satisfies the various needs of international travelers, tourists, and domestic travelers as well.

The hotel is equipped with comprehensive Chinese and Western food and beverage facilities, promoting different theme menus by the season to entertain our guests. The modern audio/video equipment, business center, and conference room designed for business travelers are the best choices for business travelers. In addition, the comprehensively equipped gym center, outdoor swimming pool, spa, flower arcade, shopping malls, etc. will satisfy your various needs.

**Services from hotels:
(For more information please check with the front desks)**

- * Luggage storing
- * Taxi & airport shuttling service
- * Airplane & train ticket ordering
- * Airplane seat reservation & confirmation
- * Sightseeing tour arrangement
- * Packaging & postal service
- * Film developing service
- * Valet parking
- * Car rental
- * Room service
- * Babysitting service (appointment required)
- * Laundry & dry-cleaning
- * Tailoring
- * Flower arrangement service
- * Vase provided



東方健康俱樂部

不惜斥資裝設，即日入住日華金典酒店
免費使用全新設施



凡於本酒店住宿期間，可向櫃檯借用行動分機(每房限借一部)

- 從客房或行動分機撥打市內電話—免費。
- 於台灣本島任何地區撥打行動分機回飯店—免費。
- 同行夥伴互打行動分機—免費。
- 於世界任何地區利用本網頁之 WebCall 給總機轉客房分機或行動分機—免費。
- 行動分機撥打本酒店以外之電話—依客房分機收費標準計費。



全館公共區域、餐廳、宴會廳及酒店客房，均提供有線或無線(802.11a/b/g+BT)免費上網。

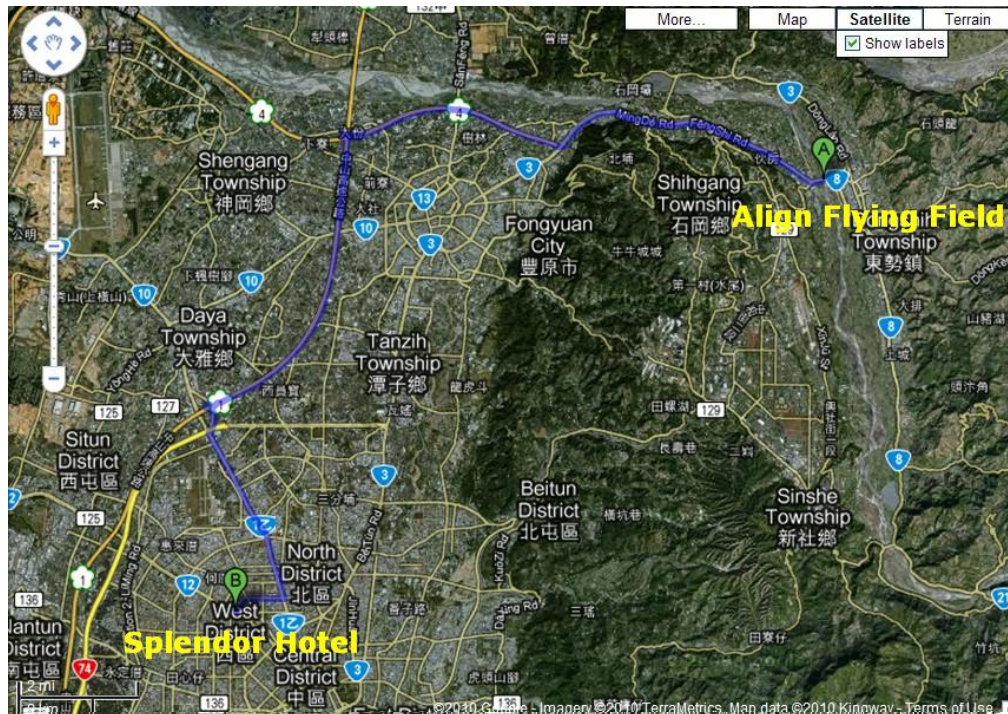
- 手持裝置請自備，酒店櫃檯備有筆記型電腦，免費提供酒店住客借用。
- 商務中心備有電腦可供住客免費上網。
- 酒店客房均提供有線及無線網路免費上網。



高鐵接駁服務
High Speed Rail shuttle service



Route to competition site



AOCC Competition Site

The 2010 AOCC competition will be held in the Align Flying field in Tungshih. The competition site is situated approximately 40 minutes from the organizer's recommended hotels, The Splendor.





Facilities and amenities at the competition site

- 1. Refreshments Stalls**
Refreshments are available the whole day during.
- 2. Food Stalls**
Various types of food will be available the whole day.
- 3. Power**
AC 110V Power available at the flying field.
- 4. Toilets**
A latrine was built in the flying field.
- 5. Medic Station**
Medical personnel will be on standby incase of emergency medical needs.

Correspondence

Organizer:

The Chinese Taipei Aeromodelling Association
John Chen (President)
Address: TAIPEI HSIEN LIN KOW HSIANG WHO PEI
VILLEGE 40-8
Telephone: 886-2-26016529
Fax: 886-2-26013864
Mobile: 886-921885136

Contact person:

Elsa L.C. Mai

E-mail: elsamark@yahoo.com

Tel: 886-926248905

Wendy Huang

E-mail: wendy@ms.align.com.tw

Tel: 886 4-25279117

May Lo

E-mail: a023@ms.align.com.tw

Tel: 886 4-25279117

Remarks:

The exchange rate for the all above prices is base on today's rate 2010/4/13 from <http://www.xe.com/>